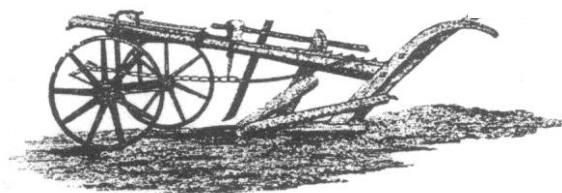


# West Grinstead & District Ploughing & Agricultural Society

Established 1871

**2019**



## **Schedule of Competitions**

*to be held at*

## **APPLESHAM FARM**

**Coombes, Nr. Lancing, BN15 0RP**

*Large vehicles are recommended to approach via the A27 from the South*

*By kind permission of W.D. Passmore & Sons*

**Saturday 21<sup>st</sup> September 2019**

**Commencing at 9.30 a.m.**

*Honorary Secretary*

**Rowan B. Allan MRICS FAAV**

**H.J. BURT**

**The Estate Offices, Steyning**

**West Sussex BN44 3RE**

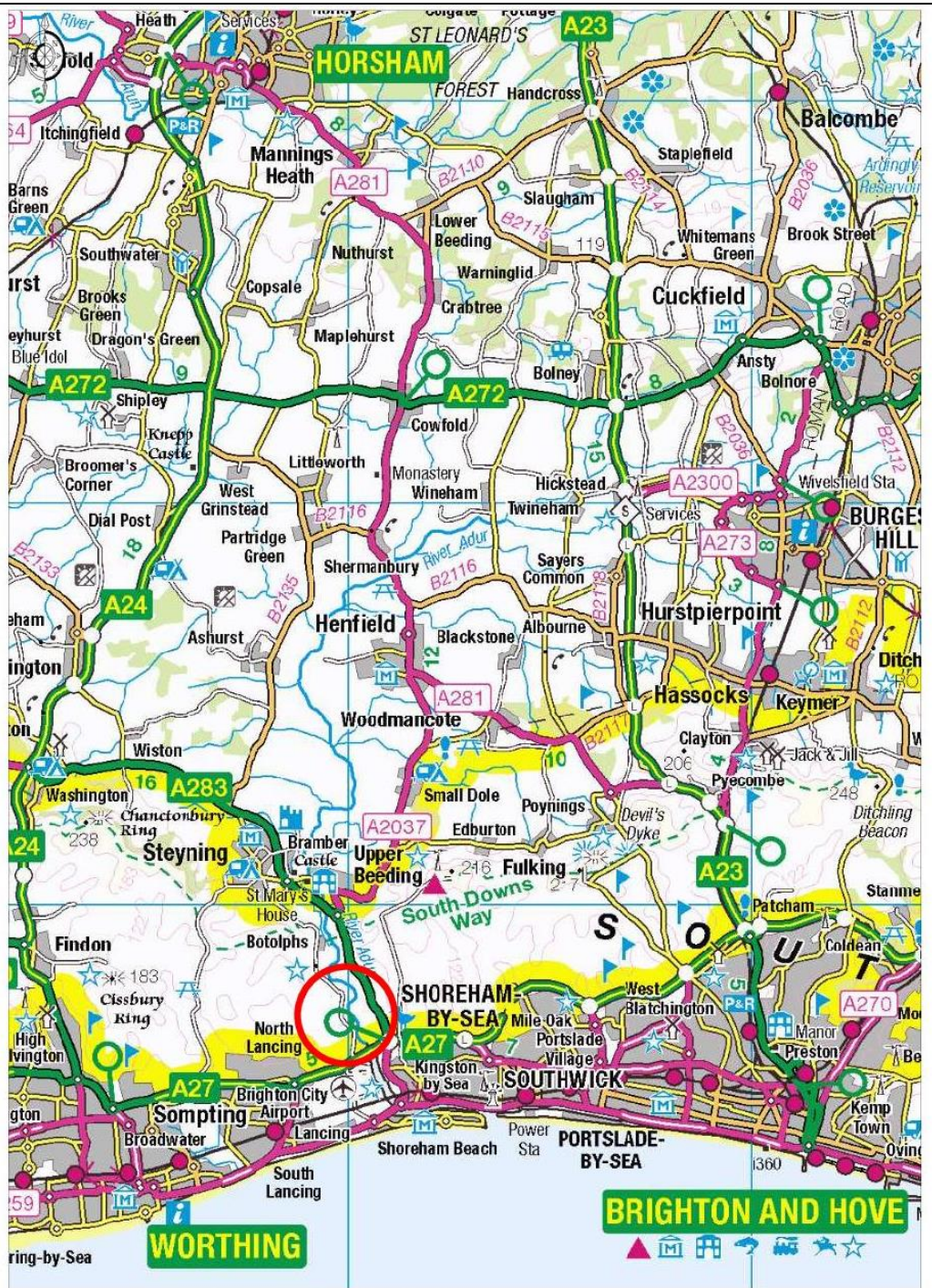
**01903 879488**

*Assistant Honorary Secretary*

**Felicity Elliott**

**07866 202588 or ladylissy@hotmail.co.uk**

**[www.westgrinsteadploughing.co.uk](http://www.westgrinsteadploughing.co.uk)**



Ordnance Survey © Crown Copyright 2019. All rights reserved.  
Licence number 100022432. Printed Scale = 1:150000

# West Grinstead & District Ploughing & Agricultural Society

**2019**

**President: REVD. RUPERT TOOVEY FRICS**

**Vice President:**

**TIM LOUGHTON MP**

## **Past Presidents**

Sir Charles Burrell  
Mark W. Burrell DL  
Mrs. M.R. Burrell  
J.R. Copithorne (decd.)  
The Lord Denman  
J.G. Eales (decd.)  
J.J. Goring  
R.H. Goring DL

The Rt. Hon. Nick Herbert CBE MP  
R.A. Hurst  
R.W.I. Lodge  
Jonathan Lucas FRICS  
The Earl of Lytton FRICS  
D.J. Marshall FRICS FAAV  
The Right Hon. Lord Maude PC  
D.J. Meadows  
P.J. Miller (posthumous)  
C.W. Passmore OBE

Mrs. S. Peay  
Jeremy Quin MP  
J.H. Rayner (decd.)  
A.P. Sandeman MFH (decd.)  
D. Sherlock  
The Rt. Hon. Sir Nicholas  
Soames MP  
V.A.G. Tregear DL  
Richard Verrall  
Don Wells

## **Patrons & Patronesses**

The Rt. Hon. Sir Peter Hordern DL

Major M.F.H. Scrase-Dickins CMG. DL

## **Committee**

**Chairman: MARK STREETER**

**Vice Chairman: DICK BRAY**

**Honorary Treasurer: C.W. Passmore OBE**

**Honorary Veterinary Surgeons: The Livestock Partnership, Petworth, West Sussex**

C. Ashworth  
T.J. Bennett  
M. Boers MRCVS  
Mr. & Mrs. P. Bower  
Mr. & Mrs. R. Bray  
M. Brown  
Mr. & Mrs. C. Charman  
R. Christian  
F. De Boer  
J. Dickson  
T.R. Dickson  
A.J. Duffett  
D. Eales  
G. Evans  
D. Exwood  
S. Feakes  
J. Ford  
N. Francis  
D. Gardner

D. Geary  
A. Griffiths  
T. Gue  
D. Harriott  
N. Hedley  
R. Jameson  
T. Jenkins  
C. Jesse  
T. Kensett  
S. Kilham  
B. Killner  
R. Killner  
C. Liverton  
D.J. Marshall FRICS FAAV  
T. Martin  
D.J. Meadows  
M. Nash  
P. Nash  
W. Parsons

H. Passmore  
S. Peacock  
T. Rudkin  
D. Sherlock  
Mrs. R. Smale  
N. Stokes  
R. Thornton  
D. Tilley  
Miss D. Verrall  
J.R. Verrall  
D.A. Wells

## **Ladies Sub-Committee**

Mrs. J. Flake  
Mrs. J. Griffiths  
Mrs. J. Griggs

Mrs. S. Harman  
Mrs. G. Nash  
Mrs. E. Passmore

Mrs. D. Reed

## **Honorary Secretary**

**Rowan B. Allan MRICS FAAV**

**H.J. BURT**

The Estate Offices, Steyning,

West Sussex BN44 3RE

01903 879488 or rallan@hjburt.co.uk

## **Assistant Honorary Secretary**

**Felicity Elliott**

07866 202588 or ladylissy@hotmail.co.uk

## WINNER OF CHALLENGE CUPS IN 2018

The F.C. Wing Silver Perpetual Challenge Bowl for the Member of the Society gaining the greatest amount of points in Field Competitions (excluding Manual Workers Classes): **W.D. Passmore & Sons**

The Agrilime Silver Perpetual Challenge Cup to the Member of the Society gaining the greatest amount of points on the Show day only (excluding Manual Workers Classes): **W.D. Passmore & Sons**

The Long Service Award: **Steve Peacock & Stephen Tuffin**

The late Dame Alice Godman's Perpetual Challenge Cup for the Champion Tractor Ploughman: **William Tupper**

The late Thomas Luckin Challenge Cup for the Best Novice Ploughman: **Roy Beeney**

The Humber Cup for Best Ploughing in Class 2: **Simon Hill**

The John Eales Memorial Cup for the winner of the Open Ploughing (Cl. 3): **Brian Young**

The C. Hardy Gillingham's Perpetual Chall. Cup for the Best Novice Ploughman (Revers. Plough): **Adam Charman**

Vernon Johnston Memorial Challenge Cup for the Best Ploughman (Reversible Plough): **David Eales Jr.**

The G.H. Strivens Cup for the Highest Placed Plough, three furrows and over: **David Eales Jr.**

The Shell Farm Service Trophy (Reversible Ploughing): **David Eales Jr.**

The David Meadows Challenge Cup for winner of Premier Ploughing: **William Tupper**

Ernest Doe Tankard for Best work by a Case/IH, IHC or David Brown tractor: **Colin Broucke**

Farol Ltd. Tankard for Best work by a John Deere tractor: **William Tupper**

The A.J. Seale Ltd. Tankard for Best work by a Fendt/Valtra (Cl. 1-6 & 16): **N/A**

The New Holland Plaque for Best Work by a NH/Ford tractor (Classes 1-6): **Neil Dallyn**

The Johnny Hawkins Memorial Cup for Best ploughing in Cl. 1-6: **William Tupper**

The Colin Baker Memorial Challenge Cup for Best Work by a Fordson tractor: **Peter Crockford**

The Brian Parsons Memorial Trophy (Best Work by a Fergie tractor): **Alan Brenton**

The Charles Lambert Challenge Cup for the Best Open Horse Ploughing: **Ian Williams**

The Verrall Challenge Cup for the Best Grey Fergie Ploughing (Cl. 9): **W.F. Cottingham**

The Leslie Weller Challenge Cup for the Best Vintage Ploughing (Trailer Plough): **Peter Crockford**

The Sir Michael Richardson Perp. Chall. Cup for the Best Vintage Ploughing (Hydraulic Plough): **David Gill**

The Michael Ford Memorial Cup for the Best Classic Tractor Ploughing: **Dick Bray**

The R.G. Nash Challenge Cup for the Champion Overall Vintage Ploughing: **David Gill**

The late Lt. Col. C.A. Calvert's Perpetual Challenge Cup for the Champion Hedger: **Michael Bentley**

The McConnell Tankard for the Best Mechanical Hedge-Cutting: **James Grantham**

The Ockendene Perpetual Challenge Cup for the Best Welded Item: **n/a**

The Trade Demonstration Challenge Cup: **Ernest Doe**

The Barkers Animal Health Shield for Tug of War: **Hurst YFC Old Boys**

The Albars Trophy for Bale Rolling: **n/a**

The Newells Perpetual Challenge Cup for the Supreme Champion in Dairy Classes: **n/a (no cattle show 2018)**

The late Mrs. Lovett Cameron's Perp. Chall. Bowl for Supreme Dairy Champ. bred by owner: **n/a**

The Uskvale Perpetual Challenge Cup for the Best Friesian Cow or Heifer: **n/a**

The Hungerhill Challenge Cup for the Best Ayrshire/Guernsey: **n/a**

The Knepp Challenge Cup for the Supreme Champion Breeding Beef Animal: **n/a**

The K.A. Ede Perpetual Challenge Cup for the Best Beef Animal: **n/a**

The Horsham Herdsman's Guild Chall. Cup to the overall winner in Young Persons Calf Classes: **n/a**

The Roger Killner Perpetual Challenge Cup for the best Young Herdsman's Stock Judging: **n/a**

The Jenny Flake Challenge Cup for YFC Stock Judging of Cattle: **Zoe Dawe (Brinsbury)**

The Peter & Diana Owen Challenge Cup for YFC Stock Judging of Sheep: **n/a**

The late Capt. J.M. Casenove's Challenge Cup for the Best Pen of 3 Lambs: **D. & C. Harriott**

The late Derek Page Memorial Cup for the Best Pen of 3 Ewe Lambs or Ewes: **D. & C. Harriott**

The Kerridge Cup to the winner of the Young Persons Lamb Class: **Austin Ockelford**

The Silver Perpetual Challenge Cup for the Best Bale of Hay: **W.D. Passmore & Sons**

The Ralph Simms Challenge Cup for the Best Sample of Ensilage: **David Exwood**

The Butler Salver for the Winner of the most points in the Grain Classes: **Lee Farm Partnership**

The Dorothea McIntyre Memorial Challenge Cup for Domestic Produce: **Mrs. Wratten**

The Caroline Exwood Challenge Cup for 4 yrs and under Domestic Produce: **Jessica Passmore & Rose Bianchi**

Mrs. Margot Burrell Challenge Cup for 5 yrs to 7yrs Domestic Produce: **Elsa Allan**

The late Elsie Rose Challenge Cup for 8 yrs to 11 yrs Domestic Produce: **Chloe Kilham**

Mrs. Alyson Rayner Challenge Cup for 12 yrs to 15yrs Domestic Produce: **Archie Weller**

The late E.H. Wrathall's Perpetual Challenge Cup for the Best Ley: **Liverton Partners**

The Sheila Colman Challenge Cup for the Best Small Flock of Sheep: **Gareth Evans**  
The Agri-Lloyd Cup for the Best Medium Flock of Sheep: **W.D. Passmore & Sons**  
The Herontye Trophy for the Best Large Flock of Sheep: **Clem Somerset**  
The Challenge Cup for the Best Group of Free-Range Pigs: *n/a*  
The late L.E.R. Bentall Challenge Cup for the Best Group of 3 Dairy Cows: **Huddlestone Farmers**  
The Eastlands Challenge Cup for the Best Female Dairy Young Stock: **Brinsbury/Chichester College**  
Southdown Feeds Ltd Challenge Cup to the Best Dairy Herdsman: **D. & C. Harriott**  
The late E.H. Covell Perp. Challenge Cup for the Best Large Dairy Herd: **TJ & JJ Binnington**  
The late W.W. Kenward Perp.Challenge Cup for the Best Small Dairy Herd: **D. & C. Harriott**  
A.J. Shier Memorial Challenge Cup for the Best Farmed Farms under 500 acres: **Liverton Partners**  
Arthur Howard Challenge Trophy for the Best Farmed Farm over 500 acres: **Huddlestone Farmers**  
The Peter Miller Memorial Challenge Cup for the Best Enviro/Conservation Work on Farm: **W.D. Passmore & Sons**  
The late Mrs. G. Leicester Reed Perp. Challenge Cup for the Best Growing Crop of Cereals: **Lee Farm Partnership**  
The Tregear Perpetual Challenge Cup for the Best Growing 'Break-Crop': **Lee Farm Partnership**  
The Geoffrey Rham Memorial Salver for the Best Suckler Herd: **S. & M. Kilham**  
The Brian Parkes Memorial Challenge Cup for Best Native Beef Suckler Herd: **Tony Robinson**  
The Buncton Challenge Cup for the Best Beef Young Stock: **Harry Hawkins**  
The Searles Challenge Cup for Best Native Beef Youngstock: **Tony Robinson**  
The Ralph Dickson Challenge Cup for Best Continental Beef Bull: **T.R. Dickson**  
The Feakes Challenge Cup for Best Native Beef Bull: **W.D. Passmore & Sons**  
The Margot Burrell Challenge Cup for the Best Crop of Forage Maize: **Huddlestone Farmers**  
The late Capt. E.C. Smith Perp. Chall. Cup for the Best Pit of Ensilage on Farm from 2017: **TJ & JJ Binnington**

---

## THE SIXTY-FOURTH ANNUAL DINNER

of the Society will be held at The Steyning Centre, Steyning  
on Saturday 12<sup>th</sup> October 2019

Challenge Cups and Trophies awarded at the Show are presented at the Annual Dinner with the exception of the Cups and Awards for Ploughing, Hedging, Welding, Children's and Domestic Classes, which are presented on the Showground after judging. **Tickets & further information from the Hon. Secretary, Rowan Allan - 01903 879488**

---

### - CRAWLEY & HORSHAM HUNT PARADE OF HOUNDS -

in the main Show Ring at about 3.30 p.m.

### -TERRIER RACING -

will also be held on the Showground during the day

---

### OPEN CLAY SHOOTING COMPETITION

Will be held on the ADJOINING COOMBS FARM and organised by the Countryman Gun Club  
*Gamekeepers, Farmers, Colts and Ladies Classes*  
Cards 10.30a.m. - 4.00p.m.

Secretary: Mrs. Emma Budd, 20 The Rise, Partridge Green, W. Sx. RH13 8JD  
01403 710374

---

- VARIETY OF FOOD STALLS & LICENSED BAR - SKITTLES -  
- TUG-OF-WAR – BALE ROLLING – EDUCATION AREA -  
- GUN DOG DEMO & SCURRY OPEN TO ALL -  
- POULTRY DISPLAYS – FERRET RACING -  
- STEAM PLOUGHING DISPLAY -  
-& OTHER COMPETITIONS INCLUDING A RAFFLE -  
*will also be held on the Showground during the day*

# SCHEDULE OF COMPETITIONS

For the avoidance of doubt **A Competitor** is defined as follows:

- a) A person farming as a sole proprietor either his own land or as a tenant.
- b) A partnership farming their own land or as a tenant. Separate partnerships with a common partner are defined as separate competitors.
- c) A person farming land on an exclusive short term arrangement.

In the case of a person farming land under contract arrangement, the competitor will be the person or persons employing the contractor.

**d) Please note, that Competitor and Exhibitor information will appear in printed and online advertised form, including in the Catalogue of Entries and published results. Competitors and Exhibitors by entering the Show & Competitions are deemed to give their consent for such information to be published and as well as being shared where appropriate with statutory bodies, including for livestock monitoring.**

**The F.C. Wing Silver Perpetual Challenge Bowl** will be awarded to the member of the Society gaining the greatest amount of points in Field Competitions & Show day classes including points gained by the herdsmen in the Dairy Herd and Young Stock Competitions, but excluding points in Special Classes and Special Prizes (including young stock handlers & stock judging) as well as excluding Domestic Produce Classes and manual workers classes (classes 1 to 17).

**The Agrilime Silver Perpetual Challenge Cup** will be awarded to the member of the Society who gains the greatest amount of points on the Show day only, excluding points in Special Classes and Special Prizes (including young stock handlers & stock judging) as well as excluding Domestic Produce Classes and manual workers classes (classes 1 to 17).

## Closing Dates for Entries

LEYS (Classes 91 to 94) .....	April 30 <sup>th</sup>
DAIRY HERDS (Class 95); GROUP OF THREE DAIRY COWS (Class 96); DAIRY YOUNG STOCK (Class 97); SHEEP FLOCKS (Classes 98 to 100); PIGS (Class 101).....	May 31 <sup>st</sup>
BEST FARMED FARMS (Classes 102 & 103).....	June 10 <sup>th</sup>
CONSERVATION CLASSES (Classes 104A&104B).....	June 10 <sup>th</sup>
GROWING CROPS (Classes 105 to 116) .....	June 10 <sup>th</sup>
CATTLE <b>FOR SHOW</b> (Classes 20 to 34) .....	August 19 <sup>th</sup>
SHEEP <b>FOR SHOW</b> (Classes 36 to 41) .....	August 19 <sup>th</sup>
BEEF ON FARM (Classes 117-122); FORAGE FIELD CROPS (Classes 123 & 125) .....	August 19 <sup>th</sup>
FORAGE FIELD CROPS (Classes 124) .....	October 15 <sup>th</sup>
DOMESTIC PRODUCE (Classes 54 to 90) .....	September 12 <sup>th</sup>
GENERAL ENTRIES (all other classes) .....	August 19 <sup>th</sup>
ENSILAGE ON FARMS (Classes 126 to 129) ....	November 20 <sup>th</sup>

**Important Note:** Entry Fees must be sent with all Entries, to reach the Secretary by the appropriate closing date. Non payment of Fees may invalidate the entries. **If you require your Entries to be acknowledged, please enclose a stamped address envelope.**



## **PLOUGHING COMPETITIONS**

1. Competitors to state on their entry form the type of tractor, the type of plough and the number of furrows that they intend to use as well as their Parish of work. In addition state if they are under 21, a YFC Member or *bona fide* agriculture student.
2. No competitor may enter in more than one class.
3. **SAFETY –**
  - a. Passengers are not allowed on tractors or ploughs at any time
  - b. Safe Practice must be demonstrated by competitors at all times on the Society's Showground. **Penalty – Disqualification** at Committee discretion.
4. Plot numbers will be drawn and allocated by the Secretaries on the date fixed for close of entries.
5. If a competitor draws an outside plot, or has a vacant neighbouring plot, a mark must be made using the pegs as set out for competition. 15 minutes of extra time will be allowed. **Any decrease in plot size will lead to disqualification** unless directed by the Stewards.
6. All competitors to be in the field **ready to start work at 9.30 a.m. sharp or they will be disqualified.** Ploughing of the opening split will commence at the direction of the Stewards. 30 minutes will be allowed. **Penalty – 2 points deducted per minute over time.**
7. On completion of the opening split competitors will wait for this to be judged and ploughing will re-commence as directed by the Stewards. A time limit of three and a half hours will then apply. **Penalty – 10 points deducted per minute over time.**
8. All ploughing to a minimum depth of 6 inches (15 cm), maximum 10 inches (25 cm). **Penalty – 20 points deduction for deliberate infringement.**
9. The first run next to the neighbouring competitor will not be judged, but ploughmen must not mark their neighbour's ploughing with their tractor wheel. If there is a problem, the competitor must contact the Steward for a ruling before ploughing the first run next to their neighbour.
10. Rolling of furrows or scratches is not allowed. **Penalty – 20 points deduction.**
11. Twin tractor wheels are not allowed.
12. Assistance to set and remove marking poles is allowed. No other assistance allowed including by signal, radio contact, mobile phone or any other method.
13. Handling, treading or shaping of scratches or furrows is not allowed
14. Only one tractor wheel mark allowed at the finish. **Penalty – 20 points deduction.**
15. Only the competitor is allowed to clean the plot of material such as straw or stones.
16. The use of global positioning technology, laser beams or any other electronic or computerised measuring devices are not allowed.
17. Conventional and commercial reversible Ploughing:-
  - a. Ploughs to be fitted with skimmers
  - b. Tailpieces are allowed – the maximum size to be:- conventional 26 cm, reversible 28 cm in length and 22 cm wide. The end of the tailpiece to be no more than 32 cm from the end of the mouldboard.
  - c. Plough bodies can be raised or lowered but cannot be raised out of the ploughing position.

- d. All plough bodies must be used when ploughing the Finish.
  - e. Extraneous attachments that manipulate the furrows or scratches are not allowed.
  - f. Competitors using variable width ploughs are not to alter the furrow width setting after the commencement of ploughing.
18. **Starts, Finishes and Premier Reversible Ploughing**
- a. Conventional Ploughs
    - i. Opening – Double opening. No land to be left unturned.
    - ii. Start to consist of 11 or 12 furrows
    - iii. Competitors to cast towards the next highest number plot (unless directed otherwise by Ploughing Steward).
    - iv. Finish – Consisting of last 8 furrows
    - v. Last furrow to be ploughed towards competitors own start (Finish wrong way **Penalty – 20 points deducted**)
  - b. Commercial reversible ploughing
    - i. Opening – Double opening with right hand bodies in accordance with sketch diagram.
    - ii. Start consists of a minimum of 8 furrows or 2 runs towards lower numbered plot (unless directed otherwise by Ploughing Steward)
    - iii. Continue from the next highest number when that competitors start is completed
    - iv. After the split, alternate bodies to be used at all times. Each run to be completed before the plough is turned over.
    - v. Finish to consist of last 12 furrows
  - c. Premier reversible ploughing
    - i. Opening – Single furrow opening with right hand bodies
    - ii. Start to consist of 8 or 9 furrows
    - iii. Finish to consist of last 19 or 21 furrows
    - iv. The competitor should make a scratch for the last 19 or 20 furrows whilst the opening is being judged. After the opening has been judged the competitor proceeds to plough 8 or 9 furrows towards the lower numbered plot (unless directed otherwise by the Ploughing Steward)
    - v. Continue at the next highest number and complete the ‘butts’.
    - vi. Complete the last 19 or 20 furrows.
    - vii. Alternate bodies to be used at all times. Each run to be completed before the plough is turned over.
    - viii. The use of sighting poles at the start of the ‘butts’ is not allowed.
    - ix. When ploughing the ‘butts’, competitors cannot travel to the end of the plot to turn. N.B. When ploughing the joining furrow attachments are not allowed, but it is permissible to show only one full furrow on the first run.
19. The Societies Rules are based on the rules of the Society of Ploughmen but differ in some respects. N.B Commercial Reversible Opening, Time allowed and Depth of Ploughing.



**Judges method of scoring: CONVENTIONAL PLOUGHS**

OPENING.....Well cut, uniform and straight	20
START (11 or 12 furrows)....Uniform and level	20
SEED BED.....Weed control and soil made available	20
FIRMNESS.....Firm, well packed furrows; no holes	20
UNIFORMITY.....Clearly defined uniform furrows; no pairing	20
FINISH (Last 8 furrows)....Uniform and shallow	20
INS & OUTS.....Neat, accurate and regular	20
STRAIGHTNESS.....Straightness of the whole plot	20
GENERAL APPEARANCE.....Workmanship & general appearance of whole plot	20
<b>TOTAL</b>	<b>180</b>

**Judges method of scoring: REVERSIBLE PLOUGHS**

OPENING.....Well cut uniform and straight	20
START(Minimum of 8 or 9 furrows)....Uniform and level	20
SEED BED.....Weed control and soil made available	20
FIRMNESS.....Firm, well packed furrows; no holes	20
UNIFORMITY.....Clearly defined uniform furrows; no pairing	20
ACCURACY OF FINAL FURROW....Close to 1 <sup>st</sup> . furrow with no unploughed or re-ploughed land	20
INS & OUT.....Neat accurate and regular	20
STRAIGHTNESS.....Straightness of the whole plot	20
GENERAL APPEARANCE....Workmanship and general appearance of whole plot	20
<b>TOTAL</b>	<b>180</b>

**Judges method of scoring: PREMIER REVERSIBLE PLOUGHS**

OPENING.....Well cut uniform and straight	20
START(8 or 9 furrows).....Uniform and level	20
SEED BED.....Weed control and soil made available	20
FIRMNESS.....Firm, well packed furrows; no holes	20
UNIFORMITY.....Clearly defined uniform furrows, no pairing	20
JOINING FURROW & BUTTS.....Neat, accurate with no dips or mounds	20
FINISH (Last 19 or 20 furrows).....Uniform and shallow	20
ACCURACY OF FINAL FURROW....Close to 1 <sup>st</sup> . furrow with no unploughed or re-ploughed land	20
INS & OUTS.....Neat, accurate and regular	20
STRAIGHTNESS.....Straightness of the whole plot	20
GENERAL APPEARANCE.....Workmanship and general appearance of whole plot	20
<b>TOTAL</b>	<b>220</b>

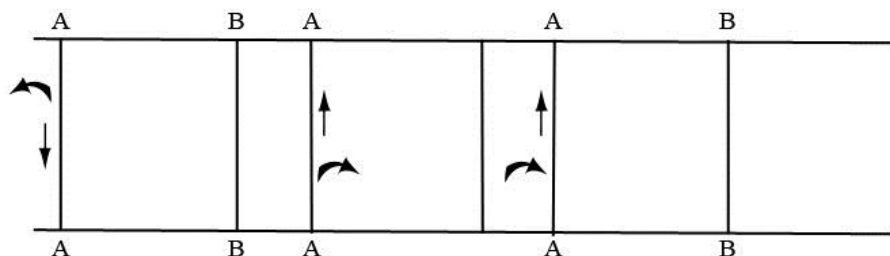
**Note:** Seedbed, firmness and uniformity cover the whole of the plot, *i.e.* start furrows, butts and final 19 or 21 furrows. A Penalties Section also applies to the Scorecard. Any further information on scoring from Ben Killner on 07854 892132.

**Tuition is available for Novice Ploughmen:** Contact Andy Duffett on 01903 750730 or Bill Parsons for conventional ploughing only on 01403 753106.

# RULE 18B

## OPENING

Fig. 1

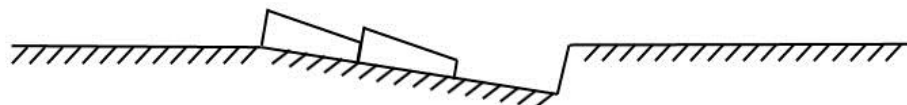


## BACKING

Fig. 2

Opening Split. Fig. 1

Furrows thrown towards preceding letter.

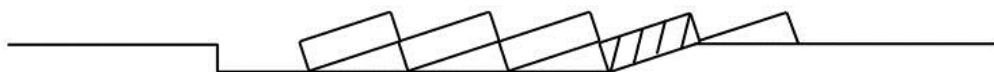


Completed Split. Fig. 2



NOTE: Shaded furrow taken from bottom of open furrow in fig. 1.  
Contains no stubble

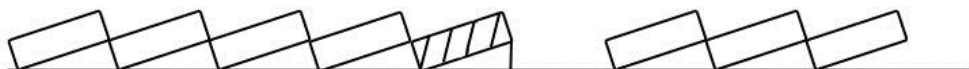
Backing.



Finish. This is ideal.



Finish. This is acceptable.



## TRACTOR PLOUGHING

*In accordance with the above West Grinstead Society Rules based on the Society of Ploughmen Rules*

**Entry Fee: £12.00 (including lunch & beer ticket)**

**1 Two or More Furrow Conventional Hydraulic Plough or Vintage Trailed/Mounted Plough.** Open to Novice Tractor Ploughmen who have not won more than two first-prizes in any conventional/vintage ploughing competitions other than Special Awards. Prize money offered by **The Society** **£15.00 £10.00 £6.00**

**2 Two or More Furrow Conventional Hydraulic Plough [non match plough].** Prize money offered by **Oakes Bros. Ltd.** **£15.00 £10.00 £6.00**

**3 Two Furrow Conventional Match Ploughs. Open to Sussex and Surrey.** Prize money offered by **Mrs. M. Burrell & Partners** **£30.00 £20.00 £10.00**

**4 Reversible Hydraulic Plough. Open to Novice Tractor Ploughmen** who have not won more than two prizes in any ploughing competition other than a Special Award, with reversible plough. Prize money offered by **ACS (Bio Solids)** **£15.00 £10.00 £6.00**

**5 Reversible Hydraulic Plough. Open to Sussex and Surrey.** Prize money offered by **C & O Tractors Ltd.** **£30.00 £20.00 £10.00**

**6 Premier Reversible Hydraulic Plough.** Ploughed and judged according to National Rules. Prize money offered by **Westons Farm Shop, Itchingfield** **£15.00 £10.00 £6.00**

**The Dame Alice Godman, D.B.E. Perpetual Challenge Cup** to the Overall Champion Tractor Ploughman of the Day in ALL Ploughing Classes (except horse ploughing).

**The Johnny Hawkins Memorial Challenge Cup** to the Champion Tractor Ploughman in Classes 1 to 6.

**The late Thomas Luckin Perpetual Challenge Cup** to the winner of Class 1 (novice ploughman).

**The John Eales Memorial Cup** to the winner of Class 3 (open ploughing).

**The C. Hardy Gillingham Perpetual Challenge Cup** to the winner of Class 4 (novice reversible ploughman).

**The Vernon Johnston Memorial Challenge Cup** presented to the winner of Class 5.

**The David Meadows Challenge Cup** presented to the winner of Class 6.

**Special Prize for the Best Ploughing of the day** by a competitor aged under 21 (on show day). Prize money offered by **Richard Killner** **£15.00 £10.00 £5.00**

**A Special Prize of £10.00** will be awarded for the best ploughing of the day by a Young Farmers' Club member.

**A Special Prize of £10.00** will be awarded for the best work by a *bona fide* agricultural student.

**H.J. BURT** offer a **Special Prize of £15.00** to competitor producing best finish in Class 4.  
**Oakes Brothers** offer **two prizes of £10.00 each** for the best work done by (a) a New Holland tractor in Classes 1 to 3; (b) a New Holland tractor and reversible plough in Classes 4 to 6, but open only to competitors in the Society's area.

**Oakes Bros. Ltd.** will present **The New Holland Tractor Salver** for the best work by a New Holland tractor in Classes 1 to 6.

**Shell Farm Service Trophy** awarded to the winner of Class 5.

**Ernest Doe** offer a Tankard for the best work by a Case/IH, IHC or David Brown tractor in Classes 1 to 6, but only open to competitors in the Society's area.

**Farol Ltd** offer a Tankard for the best work by a John Deere tractor in Classes 1 to 6.

**The Colin Baker Memorial Cup** for the best work of the day by a Fordson tractor in all the Ploughing Classes.

**The Brian Parsons Memorial Trophy** for the best work of the day by a grey Ferguson ('T' range) tractor in all the Ploughing Classes.

**The G.H. Strivens Challenge Cup and £10.00** will be awarded to the highest placed competitor three furrows and over in Class 5.

## **HORSE PLOUGHING**

**Prize Money Sponsored in Memory of Charles & Joan Lambert**

**Sponsorship towards Travel by H.J. BURT, Chartered Surveyors & Estate Agents**

**Entry Free**

**All competitors are to be available start at 10.30 am**

**7 Open Horse Ploughing** in accordance with the Rules of the Southern Counties Heavy Horse Association **£15.00 £10.00 £6.00**

**8 Best Turned out Team.** To be judged before ploughing **£15.00 £10.00 £6.00**

**The Charles Lambert Perpetual Challenge Cup** presented to the winner of Class 7.

## **VINTAGE TRACTOR PLOUGHING**

*Ploughing in accordance with the West Grinstead Society Rules but Tractor and Plough specifications as set out in the Society of Ploughmen Rules (available from the Society Secretary on request)*

**Entry Fee: £12.00 (including lunch & beer ticket)**

**9 Grey Ferguson & Plough Ploughing Class.** Run in accordance with the rules of the Ferguson Heritage Club. Prize money offered by **Penfold Verrall Plant Hire & Civil Engineering** **£15.00 £10.00 £6.00**

**The Verrall Challenge Cup** presented for the best ploughing in the above Class.

**10 Open Vintage Tractor Ploughing** with any type of tractor and trailer plough manufactured pre1960. Prize money offered by **Robert Jameson**

**£15.00 £10.00 £6.00**

**The Leslie Weller Challenge Cup** presented for the best ploughing in the above Class.

**11 Open Vintage Tractor Ploughing** with any type of tractor and hydraulic plough manufactured pre 1960. Prize money offered by **A.R. Vick Agricultural & Domestic Fuels** **£15.00 £10.00 £6.00**

**The Sir Michael Richardson Perpetual Challenge Cup** presented by the late Sir Michael Richardson for the best ploughing in the above Class.

## **CLASSIC TRACTOR PLOUGHING**

*Ploughing in accordance with West Grinstead Society Rules but Tractor and Plough specifications as set out in the Society of Ploughmen Rules (available from Society Secretary on request)*

**Entry Fee: £12.00 (including lunch & beer ticket)**

**12 Classic Tractor Ploughing** with any type of tractor made after 1960 and before Q cab regulations - approx. 1976 - and mounted plough manufactured before the end of 1976. N.B. Exclusions listed in Society of Ploughmen Rules. Prize money offered by **John Ford**

**£15.00 £10.00 £6.00**

**The Michael Ford Memorial Cup** presented to the winner of the above Class.

**The R.G. Nash Memorial Challenge Cup** presented for the best overall Vintage & Classic Ploughing in Classes 9 to 12.

## **BEST KEPT TRACTOR AND PLOUGH**

**Entry Free**

**13 For the Best Kept Tractor and Plough** tractors to be at least one year old and manufactured 1961 or later. Prize money offered by **The Elliott Family**

**£10.00 £6.00 £4.00**

**14 For the Best Kept Vintage Tractor and Plough** combination to be manufactured in 1960 or before. Prize money offered by **Andy Duffett and David Tilley**

**£10.00 £6.00 £4.00**

## **HEDGE LAYING**

**Sponsored by The Crawley & Horsham Hunt**

**Entry Free**

1. Hedging commences at 9.00 a.m. and each competitor has to complete two rods by 1.00 p.m.
2. Competitors are to ballot for their sections of hedge on the site

**15 Open Hedge Laying**

**£15.00 £10.00 £5.00**

**The late Lt. Col. C.A. Calvert Perpetual Challenge Cup** presented to the Champion Hedger.

**David Liverton offers a Special Prize of £20.00** for the Section of Hedge which stands the year best, to be judged at the time of the next Ploughing Match.

## **MECHANICAL HEDGE-CUTTING COMPETITION**

**Entry Free**

**Sponsored by Yeowarts Agricultural Ltd.**

**16 For the Best Overall Example of Mechanical Hedge-Cutting** along a given section of hedge cut on the Show day. **£15.00 £10.00 £5.00**

## **LONG SERVICE TO THE COUNTRYSIDE SPECIAL AWARD**

For Agricultural & Rural Workers

**Sponsored by W. Beck & Son**

**Nominations Free**

**An annual award in recognition of Long Service to the Countryside for Agricultural & Rural Workers. Nominations are to be made to the Secretary before 1<sup>st</sup> August. The award of the prize is to be made at the Annual Dinner, for which the pre-judged winner will receive two complimentary tickets.**

## **OPEN WELDING COMPETITION**

**Entry Free**

**Sponsored by Rylands Engineering**

1. The Competitor's completed piece is to be brought to the Showground by 9.00 a.m. and will be judged at 10.30 a.m.
2. The item is to be left unpainted.

**17 For the Best Welded Item. To be judged on Creativity & quality of Welding.**

**£10.00 £6.00 £4.00**

**The Oakdene Perpetual Challenge Cup** presented for the best welded item in the above Class.

**David Meadows offers a Special Prize of £20.00** for the best entry in the above Class produced by a *bona fide* college student (at the time of welding the item).

## **TRADE DEMONSTRATION**

**Entry Fee: £25.00 or Free to those having a Trade Stand**

**18 For the Best Ploughing, Cultivation or Drainage Work** carried out by a Trade Demonstrator

**A Challenge Cup** presented by the Society to the winner of the above Class.

**19 For the Best Trade Stand**

**The Jim Green Memorial Cup** presented by Mrs. S. Peay to the winner of the above Class

## **LIVESTOCK SHOW** *[all livestock must have arrived by 9 am]*

**THE SOCIETY WILL CONTRIBUTE TOWARDS CATTLE EXHIBITORS' TRANSPORT EXPENSES ON THE BASIS OF £30/ADULT ANIMAL [12months plus] & £15/CALF [up to 12months], SUBJECT TO A MAXIMUM PAYMENT PER EXHIBITING FARM OF £90.00. Claim forms to be returned after the Show.**

1. Entries for the Cattle Show are not confined to the Society's area and the Show is open to competitors from outside the area.
2. The Committee reserve the right to amalgamate or cancel any of the Classes in the Cattle Show dependent upon the entries received.
3. First prize winners at a Show of National or County standard at the date of close of entries shall not be eligible to compete.
4. Cattle exhibited in the Cattle Classes must have been the property of the exhibitor or his predecessor on the farm for at least three months before the Show date.
5. A heifer is an animal which has not completed her first lactation.
6. Full information concerning substituted entries must be given in writing to the Honorary Secretary immediately on arrival at the Show Ground.
7. Cattle to be on the Show Ground by 10.00 a.m. and to remain until after the parade of the prize-winning cattle. Judging will commence at 10.30 a.m. sharp
8. Luncheon tickets will be provided for herdsmen in the Dairy Classes at the rate of one ticket for each 4 animals forward
9. **Important** - Competitors should equip themselves with a bucket or machine unit in the event of Judges requesting them to milk out in the Show ring. A mobile source of vacuum will be available on the Show Ground.
10. Animals exhibited should be free from evidence of contagious or infectious diseases. **Exhibitors are expected to comply with all Bio-security and other regulations in force at the time of the Show and to fully co-operate with Show staff and organisers in this respect. EXHIBITORS ARE ALSO ADVISED TO CONTACT B.C.M.S. WITHIN 7 DAYS OF THE SHOW TO DOUBLE-CHECK THE RECEIPT & RECORDING OF THEIR CATTLE MOVEMENT CARDS.**
11. The decision of the Committee in regard to the interpretation of these regulations shall be final.

**The Uskvale Perpetual Challenge Cup** presented by the late R.P. Edwards for the best Holstein Friesian Cow or Heifer exhibited in Classes 20 to 23.

**The Hungerhill Perpetual Challenge Cup** presented by W.A. Mcphail for the best non-Holstein/Friesian Cow or Heifer exhibited in Classes 20 to 23.

**The late Mrs. Lovett Cameron Perpetual Challenge Bowl** presented to the Best Heifer exhibited in Classes 21 & 22.

**The Newells Perpetual Challenge Cup**, presented by the late Wing Commander R. Scrase-Dickens for the Supreme Dairy Champion from Classes 20 to 23.

**The Society will award Championship and Reserve Championship Rosettes** to the best animal of each breed.

**PLEASE STATE ON YOUR ENTRY FORM IF YOUR CATTLE  
ARE REQUIRED TO BE PENNED OR ARE HALTER TRAINED  
& CAN BE TETHERED IN THE CATTLE LINES**



## **CATTLE SHOW**

**Dairy & Beef Classes 20 to 31 and Calf Handling Classes 32-34.**

**Dairy Cattle classes kindly sponsored by The Society**

**Beef Cattle classes kindly sponsored by Henry Adams – Property Consultants & Estate Agents**

**Sponsorship towards school transport costs kindly donated by Huddlestone Farmers**

**Additional stock fencing materials for Show Ring & Livestock Areas kindly sponsored by TIM BENNETT FARM & FENCING SERVICES.**

### **IMPORTANT NOTICE - 2019**

**LAST YEAR, DUE TO CERTAIN INCIDENTS OF T.B. BEING DETECTED IN CATTLE IN DIFFERENT PARTS OF THE COUNTY & INCLUDING WITHIN THE SOCIETY'S AREA, THE SOCIETY TOOK THE DIFFICULT, BUT PRUDENT DECISION, NOT TO RUN AN 'OPEN' CATTLE SHOW. THIS WILL APPLY AGAIN THIS YEAR TO MINIMISE THE RISK OF POTENTIAL INTER-FARM SPREAD BETWEEN DIFFERENT FARM COMPETITORS & WHICH IS ESPECIALLY RELEVANT WHERE OUR HOST FARMERS RUN THEIR OWN LIVESTOCK ENTERPRISE.**

**AS AN ALTERNATIVE & ASSUMING NO FURTHER T.B. ISSUES, THE SOCIETY ARE HOPEFUL THAT CHICHESTER COLLEGE (BRINSBURY CAMPUS) AT PULBOUROUGH, WILL BE ABLE TO ATTEND THE SHOW AS THEY DID IN 2018 WITH A SELECTION OF DAIRY AND BEEF ANIMALS AS WELL AS CALVES TO PROVIDE A MIXTURE OF DIFFERENT ANIMALS ON SHOW AND WITH THESE BEING JUDGED IN THEIR PENS OR IN THE MAIN RING. THIS ALSO OFFERS THE STUDENTS A GREAT OPPORTUNITY TO STRENGTHEN THEIR HANDLING AND SHOWING EXPERIENCE.**

**WE HOPE TO RUN AN OPEN CATTLE SHOW AT FUTURE EVENTS.**

**WEST GRINSTEAD AND DISTRICT PLOUGHING AND AGRICULTURAL SOCIETY  
2019**

***ENTRY FORM FOR***

**LEYS (CLASSES 91& 94) - ENTRIES CLOSE 30<sup>th</sup> APRIL 2019**

**SHEEP FLOCKS (CLASSES 98 TO 100); PIGS (CLASS 101) - ENTRIES CLOSE 31<sup>st</sup> MAY 2019**

**BEST FARMED FARMS (CLASSES 102 & 103) CONSERVATION CLASSES (104A & 104B)**

**GROWING CROPS (CLASSES 105 TO 116)**

**ENTRIES CLOSE 10<sup>th</sup> JUNE 2019**

For Entry Fees see Schedule of Competitions

CLASS NO.	LOCATION OF ENTRY	ENTRY FEE

**TOTAL ENTRY FEES  
SUB/DONATION  
TOTAL                   £**

**NAME:**

**ADDRESS:**

**TEL. NO.:**

**E-MAIL:**



WEST GRINSTEAD AND DISTRICT PLOUGHING AND AGRICULTURAL SOCIETY  
2019

ENTRY FORM FOR DAIRY CATTLE, BEEF CATTLE, YOUNG PERSON'S CALF HANDLING AND  
YOUNG HERDSMAN'S STOCK JUDGING (CLASSES 20 TO 35)  
SHEEP AND YOUNG PERSON'S LAMB HANDLING (CLASSES 36 TO 41)

For Entry Fees see Schedule of Competitions  
ENTRIES CLOSE 19<sup>TH</sup> AUGUST 2019

CLASS NO.	NAME OF ANIMAL & STATE IF <u>HALTER-TRAINED &amp; TO BE</u> <u>TETHERED, OR IF TO BE PENNED</u> <i>(cattle only)</i>	BREED OR CROSS STATE M.V. REG. FOR SHEEP	COMPETITOR & AGE (Classes 33 to 36 & 41)	ENTRY FEE
TOTAL ENTRY FEES SUB/DONATION TOTAL				£

NAME:

DRESS:

L. NO.:

WESTOCK COMPETITORS ARE EXPECTED TO BRING WITH THEM ALL NECESSARY FORMS TO COMPLY WITH DEFRA OR OTHER STATUTORY AUTHORITIES CONTROLS  
CONDITIONS IN RESPECT OF MOVEMENT & EXHIBITING OF STOCK INCLUDING UNDER FOOT & MOUTH CONTROLS.

CATTLE PASSPORTS MUST ACCOMPANY ALL CATTLE AND BE AVAILABLE FOR STAMPING UPON ENTRY TO THE SHOWGROUND



## WEST GRINSTEAD AND DISTRICT PLOUGHING AND AGRICULTURAL SOCIETY

2019

**ENTRY FORM FOR DOMESTIC PRODUCE (CLASSES 54 TO 90)**

Entry Fee £1 per entry

Children's Classes are free - **please state age below**

**Please send entries to Mrs. J. Flake (MARKED 'PLOUGHING MATCH'),**  
**at Church Farm, Coombes, Lancing, West Sussex BN15 0RS**  
**01273 440336      by 10<sup>th</sup> September 2019**

CLASS NO.	NAME OF COMPETITION	ENTRY FEE

**TOTAL ENTRY FEES**  
**SUB/DONATION**  
**TOTAL                      £**

NAME:

ADDRESS:

TEL. NO.:

E-MAIL:









WEST GRINSTEAD AND DISTRICT PLOUGHING AND AGRICULTURAL SOCIETY  
2019

**ENTRY FORM FOR ALL PLOUGHING CLASSES, BEST KEPT TRACTOR & PLOUGH (CLASSES 1 TO 14)  
HEDGE LAYING, MECHANICAL HEDGE-CUTTING AND OPEN WELDING COMPETITIONS (CLASSES 15 TO 17)**

For Entry Fees see Schedule of Competitions

**ENTRIES CLOSE 19<sup>th</sup> AUGUST 2019**

Class No.	Number of furrows on plough	State age if under 21 & whether VFC member or student	Make of tractor or name of horse team	Make of plough	Age of tractor	Name of competitor & Parish of work	Entry fee
TOTAL ENTRY FEES SUB/DONATION TOTAL							£

NAME OF EMPLOYER:

ADDRESS:

TEL. NO.:



**WEST GRINSTEAD AND DISTRICT PLOUGHING AND AGRICULTURAL SOCIETY**

**2019**

***ENTRY FORM FOR***  
**ENSILAGE/HAYLAGE ON FARMS (CLASSES 126 TO 129)**

**For Entry Fees see Schedule of Competitions**

**ENTRIES CLOSE 20<sup>th</sup> NOVEMBER 2019**

<b>CLASS NO.</b>	<b>LOCATION OF ENTRY</b>	<b>ENTRY FEE</b>

**TOTAL ENTRY FEES**  
**SUB/DONATION**  
**TOTAL                      £**

**NAME:**

**ADDRESS:**

**TEL. NO.:**

**E-MAIL:**



## **ANY BEEF BREED** *[all livestock must have arrived by 9 am]*

**Sponsored by Henry Adams - Property Consultants & Estate Agents**

**Entry Free**

**27 Suckler Cow** suitable for breeding **£12.00 £8.00 £5.00**

**28 Maiden, or in calf Heifer** suitable for breeding **£12.00 £8.00 £5.00**

**A Special Prize of £10.00** will be awarded for the best Pure Bred Native entry in Classes 27 & 28.

**The Knepp Challenge Cup** presented to the Supreme Champion of Classes 27 and 28.

## **BEEF CATTLE** *[all livestock must have arrived by 9 am]*

**Sponsored by Henry Adams - Property Consultants & Estate Agents**

**Entry Fee**

**29 Steer**, suitable for beef, of any breed or cross, under 18 months old on day of Show  
**£12.00 £8.00 £5.00**

**30 Steer**, suitable for beef, of any breed or cross, over 18 months old on day of Show  
**£12.00 £8.00 £5.00**

**31 Maiden Heifer**, suitable for beef, of any breed or cross **£12.00 £8.00 £5.00**

**A Special Prize of £10.00** will be awarded for the best Pure Bred Native entry in Classes 29-31.

**The K.A. Ede Perpetual Challenge Cup** presented for the Best Beef Animal from Classes 29 to 31.

## **YOUNG PERSONS CALF HANDLING CLASSES**

*[all livestock must have arrived by 9 am]*

**Sponsorship towards school transport costs donated by Huddlestone Farmers Ltd.**

**Entry Free**

1. Competition to take place at about 10.30 a.m.
2. NO ANIMAL MAY BE SHOWN IN MORE THAN ONE CLASS WITHIN THIS COMPETITION. **Young children under the age of 13 years must be accompanied by an adult.**
3. **A Special Prize of £10.00** will be awarded for the best Young Persons Calf Handler of the day who is a Young Farmers' Club member or a *bona fide* Agricultural Student.
4. Rosettes awarded to all competitors.

**32 Calf up to 12 months**, of any breed or cross exhibited by a young person aged 10 years and under

**£8.00 £6.00 £5.00 £4.00**



**33 Calf up to 12 months**, of any breed or cross exhibited by a young person aged 11 to 13 years. **£8.00 £6.00 £5.00 £4.00**

**34 Calf up to 18 months**, of any breed or cross, exhibited by a young person aged 14 to 21 years [animal age/ size to be ‘matched’ to age/size of handler]. **£8.00 £6.00 £5.00 £4.00**

**A Challenge Cup** donated by the former **Horsham Herdsman’s Guild** to the overall winner of Classes 32 to 34.

## **YOUNG FARMERS STOCK JUDGING CLASS**

Stock judging of a pre-selected batch of cattle and sheep. All competitors to be YFC members on the Show day.

**35A Young Farmers Stock Judging Class – Cattle** **£10.00 £6.00 £5.00 £4.00**  
**The Jenny Flake Perpetual Challenge Cup** presented to the winner of this Class.

**35B Young Farmers Stock Judging Class – Sheep** **£10.00 £6.00 £5.00 £4.00**  
**The Peter & Diana Perpetual Challenge Cup** presented to the winner of this Class.

**The Roger Killner Perpetual Challenge Cup** will be presented to the overall winner of the two Classes.

## **SHEEP SHOW**

**Entry Fee: £5.00**

**BUTCHER’S LAMBS** *[all livestock must have arrived by 9 am]*

**Sponsored by TBC**

1. MAEDNI VISNA: Separate penning facilities will be available for sheep on the Maedi Visna register (except for lamb handling class).

2. **No ram lambs to be entered.**

**36 For the Best Pen of 3 Finished Butcher’s Lambs** of any breed or cross, weighing a maximum of 265 lbs (120kg) **£12.00 £8.00 £5.00**

**37 For the Best Pen of 3 Finished Butcher’s Lambs** of any breed or cross, weighing over 265 lbs (120kg) **£12.00 £8.00 £5.00**

**The late Capt. J.M. Cazenove Perpetual Challenge Cup** presented to the best pen of 3 lambs from Classes 36 & 37.

**ewe Lambs & ewes** *[all livestock must have arrived by 9 am]*

**Sponsored by Littleworth Farms**

**38 For the Best Pen of 3 Ewe Lambs**, suitable for breeding of any breed or cross **£12.00 £8.00 £5.00**

**39 For the Best Pen of 3 Shearlings**, suitable for breeding of any breed or cross  
**£12.00 £8.00 £5.00**

**40 For the Best Pen of 3 Breeding Ewes**, of any breed or cross  
**£12.00 £8.00 £5.00**

**The Derek Page Memorial Trophy** will be awarded to the best entry in Classes 38 to 40.

## **YOUNG PERSONS LAMB HANDLING CLASS**

*[all livestock must have arrived by 9 am]*

**Sponsored in Memory of Charles & Joan Lambert**

**Entry Free**

1. Competition to take place at about 1.30 p.m.
2. NO ANIMAL MAY BE SHOWN IN MORE THAN ONE CLASS WITHIN THIS COMPETITION.
3. **No Maedni-Visna (M-V) sheep or ram lambs to be entered in this lamb handling class.**
4. Rosettes awarded to all competitors.
5. At the Judge's and Steward's discretion, this class maybe divided.

**41 Lamb** of any breed or cross-exhibited by a young person aged up to 12 years  
**£7.00 £6.00 £5.00 £4.00 £3.00**

**The Kerridge Cup** presented by Sally Kerridge to the winner of the above Class.

## **FIELD PRODUCE CLASSES**

### **BALED HAY & HAYLAGE**

**Sponsored by Bartholomews Agri Food Ltd**

**Entry Fee: £3.00**

1. All bales shown are to have been pick-up baled in the field this year.

**42 For the Best Bale of Seeds Hay** **£6.00 £4.00 £3.00**

**43 For the Best Bale of Meadow Hay** **£6.00 £4.00 £3.00**

**A Silver Perpetual Challenge Cup** presented for the best bale of hay from Classes 42 & 43.

**44 For the Best Bale of Haylage** **£6.00 £4.00 £3.00**

### **ENSILAGE**

**Sponsored by Bartholomews Agri Food Ltd**

**Entry Fee: £3.00**

**45 For the Best Made 12 kg sample of Ensilage** **£6.00 £4.00 £3.00**

**The Ralph Simms Perpetual Challenge Cup** presented for the best entry in the above Class.

# GRAIN

**Sponsored by Bartholomews Agri Food Ltd**

**Entry Fee: £3.00**

1. Grain is to be shown in a plain paper bag, a fair example of not less than five quarters grown on a piece of land in Exhibitor's occupation and within the radius of the Society's district this year
2. All clipped corn will be disqualified
3. Cards giving name of variety to be placed inside the bags
4. Winter and Spring varieties are as classified
5. Milling (groups 1 & 2) and Feed (groups 3 & 4) varieties of wheat are as classified
6. Competitors must ensure that **each entry weighs 25 kg** as specified

<b>46 25 kg of Winter Wheat (Milling)</b>	<b>£6.00 £4.00 £3.00</b>
<b>47 25 kg of Winter Wheat (Feed)</b>	<b>£6.00 £4.00 £3.00</b>
<b>48 25 kg of Spring Wheat</b>	<b>£6.00 £4.00 £3.00</b>
<b>49A 25 kg of Winter Oats</b>	<b>£6.00 £4.00 £3.00</b>
<b>49B 25 kg of Spring Oats</b>	<b>£6.00 £4.00 £3.00</b>
<b>50 25 kg of Barley (Malting)</b>	<b>£6.00 £4.00 £3.00</b>
<b>51 25 kg of Barley (Feed)</b>	<b>£6.00 £4.00 £3.00</b>
<b>52 25 kg of Field Beans</b>	<b>£6.00 £4.00 £3.00</b>
<b>53 25 kg of Field Peas</b>	<b>£6.00 £4.00 £3.00</b>

**The Butler Salver** presented for the greatest amount of points gained between Classes 46-53.

## **DOMESTIC PRODUCE CLASSES**

**Entries in the Domestic Produce Classes must be staged by 10am and are to be collected between 3pm and 5pm (any entries left after this time will be disposed of)**

**ENTRIES TO Mrs. J. Flake, Church Farm, Coombes, Lancing, W. Sussex BN15 0RS. 01273 440336 (please mark envelope 'PLOUGHING MATCH').**

These Classes are open to everybody.

**Competitors may only enter one item per numbered Class and the entry must have been made by the competitor. No late entries will be accepted. Entries not to be removed before 3.00 p.m.**

**Entry Fee: £1 in advance or £2 on the day. Cheques (only for £5.00 or more) payable to 'West Grinstead Ploughing Society'**

**Children's Entries are FREE but child's AGE must be stated on entry form.**

## VEGETABLES AND HERBS

### 54 A Collection of Home Grown Produce

(which can include eggs, vegetables and fruit in a basket)

### 55 “What a Whopper!” (preferably a vegetable)

### 56 Three Chicken Eggs

### 57 A Bunch of Five Fresh Herbs (to be named)

## FLOWER ARRANGEMENT

### 58 A Flower Arrangement to depict the Rugby World Cup 2019

### 59 An Indoor Pot Plant (tended by the exhibitor for at least 6 months)

## DOMESTIC PRODUCE

All plated items **MUST** be covered with cling film

### 60 A Jar of Jam

### 62 A Jar of Honey

### 64 A Jar of Chutney

### 66 Six Savoury Profiteroles

### 68 Three-Egg Victoria Sponge

### 70 Bread Plait

### 72 Mocha Swirls (recipe below)

### 73b A Bottle of Sloe Gin

### 61 A Jar of Jelly

### 63 A Jar of Marmalade

### 65 Homemade Soft Cheese

### 67 Three Diabetic Brownies

### 69 A Family Size Dessert using Apples

### 71 A Quiche

### 73a A Jug of Traditional Lemonade

**Mocha Swirls** (makes 9 swirls – prep time 30 mins, cook time 35 mins)

#### **Ingredients**

*Filling:* 1 tbsp unsalted butter (melted); 2 tsp cocoa powder; 2 tsp instant coffee powder/granules; 65g light brown sugar; 100g dark chocolate (finely chopped) or choc. chips.

*Dough:* 450g s/raising flour (plus to dust); ¼ tsp salt; 2 tbsp caster sugar; 100g salted butter (melted) plus for greasing; 1 tsp vanilla bean paste; 2 medium egg yolks; 200ml whole milk (plus extra for glazing).

*Icing:* 2 tbsp boiling water; 2 tsp instant coffee powder/granules; 1 tbsp unsalted butter (softened); 2 tbsp full-fat cream cheese; 125g icing sugar (sifted).

#### **Method:**

- Make the filling by mixing together all the filling ingredients.
- Heat oven to 180c/160cfan/mark 4 gas. Grease a 20cm round loose-bottomed cake tin.
- Add s/raising flour, salt and sugar to bowl for a quick mix. In a smaller bowl, whisk together until combined the melted butter, vanilla, egg yolks and milk. In the dry mix, make a well and add in the wet mix, turning with a palette knife and then with hands to make smooth dough.
- Pre-flour a surface and roll out the dough to a rectangle c. 30-25cm. Evenly spread the filling on top of the dough to the edges. Then, starting from the long edge, roll up the dough.
- Cut the roll into 9 equal pieces and turn on side to see swirls. With your palms give each swirl a gentle push to reduce any gaps. Place them on their sides (swirls face up) in prepared tin, brush with milk and bake for 30-35 mins. They are ready when golden on top and rolls are coming away from one another. Then leave to completely cool in the tin.
- Making the icing by mixing boiling water and coffee; allow mixture a few mins to cool, then add butter, cream-cheese and icing sugar and mix until thick. Drizzle icing over top of swirls.
- Remove swirls from tin and serve.

## HANDICRAFTS

**74 An Item Made of Wool**

**75 Photo of Sunshine**

**76 A Homemade Item of Wood**

**77 A Family Made Bird Table**

**78 'MEN ONLY' Six Sausage Rolls**

**79 Disaster class** (includes all classes - enter on day)

**The Dorothea McIntyre Memorial Challenge Cup** will be awarded to the Competitor gaining the greatest amount of points in the Domestic Produce Classes 54-73b.

**The successful Produce Stall is planned to be run again this year. Any Competitors, who would like to donate any produce, please contact either Sara Passmore on 07989 399098 [sara.passmore@hotmail.com](mailto:sara.passmore@hotmail.com) or Caroline Harriott on 07774 190189 or [harriott7qq@btinternet.com](mailto:harriott7qq@btinternet.com). It is stressed that Competitors are not pressured to do so.**

## CHILDREN'S CLASSES

Please state age on exhibit NOT name. Entry for children is free.  
All plated items **MUST** be covered with cling film.

*Children aged 4 years and under*

**80 A Decorated Stone** £3.00 £2.00 £1.50

**81 A Decorated Biscuit** £3.00 £2.00 £1.50

*Children aged 5 yrs to 7 yrs*

**82 A Miniature Garden in a Seed Tray** £3.00 £2.00 £1.50

**83 A Decorated Swiss Roll** (judged on appearance alone) £3.00 £2.00 £1.50

**84 A Painting of a Family Member** £3.00 £2.00 £1.50

*Children aged 8 yrs to 11 yrs*

**85 Decorated Wellies** £3.00 £2.00 £1.50

**86 A Soap Carving** £3.00 £2.00 £1.50

**87 Four Butterfly Cupcakes** (judged on taste & appearance) £3.00 £2.00 £1.50

*Children aged 12 yrs and over*

**88 A Decorated Cake in the Theme of Rugby World Cup 2019** (judged on appearance alone) £3.00 £2.00 £1.50

**89 A Photo of Your Favourite Animal** £3.00 £2.00 £1.50

**90 n/a**

All Children's classes to be judged by appearance only, unless stated otherwise.

**Perpetual Challenge Cups** presented by Mrs. Margot Burrell, Mrs. Bush, Mrs. Alyson Rayner and in memory of Caroline Exwood will be awarded to the Competitors gaining the greatest amount of points in the Children's Classes for their age group.

## **FIELD COMPETITIONS**

### **LEYS**

**Sponsored by Bodle Bros Ltd.**

**Entry Fee: £4.00**

1. To be judged on farm in early May.
2. Minimum area of four acres in each Class and the whole field to be judged.

**91 For the Best Ley sown in 2017 or before for mowing** **£7.00 £5.00 £4.00**

**92 For the Best Ley sown in 2017 or before for grazing** **£7.00 £5.00 £4.00**

**93 For the Best Ley sown in 2018 for mowing** **£7.00 £5.00 £4.00**

**94 For the Best Ley sown in 2018 for grazing** **£7.00 £5.00 £4.00**

**The late E.H. Wrathall Perpetual Challenge Cup** presented to the best entry from Classes 91 to 94.

### **DAIRY HERD**

**Sponsored by Bodle Bros Ltd**

**Entry Fee: £5.00**

1. To be judged on farm in June.
2. All cows on the farm that have had a calf are to be judged.
3. Either Milk Record books or monthly producer returns as well as quality returns must be available for the Judge's inspection.
4. The following points will be taken into account in judging these competitions:
  - a) general physical condition
  - b) conformation and udder
  - c) milk yields and quality
  - d) calving index
  - e) profitability

**95 For the Best Dairy Herd of any Breed**  
(Herdsman to take prize money) **£10.00 £7.00 £5.00**

**The Southdown Feeds Ltd Challenge Cup** to be awarded to the best herdsman in the above Class.

**The late E.H. Covell Challenge Cup** awarded to the best herd in the above Class of **over 200 cows**.

**The late W.W. Kenward Challenge Cup** awarded to the best herd in the above Class of **under 200 cows**.

### **GROUP OF THREE**

**Sponsored by Bodle Bros Ltd.**

**Entry Fee: £5.00**

1. To be judged on farm in June.
2. Cows to be selected and ready as a group with facilities for examination.
3. Only one entry to be made per herd.
4. Cows must be unclipped except for hygiene reasons.

**96 For the Best Group of Three Dairy Cows of any Breed**, in calf or in milk  
**£10.00 £7.00 £5.00**

**The late L.E.R. Bentall Challenge Cup** presented for the best entry in the above Class.

## **DAIRY YOUNG STOCK**

**Sponsored by The Society**

**Entry Fee: £5.00**

- 1 To be judged on farm in June.
- 2 All eligible young stock not yet calved and other than stock bulls to be judged, subject to a minimum of ten.

**97 For the Best Female Young Stock of any Breed** (over 6 months old)  
 (Herdsman to take prize money) **£8.00 £6.00 £5.00**

**The Eastlands Challenge Cup** presented by the late Mrs. Lovett Cameron to the best entry in the above Class.

## **SHEEP FLOCKS**

**Sponsored by Complete Land Management**

**Entry Fee: £5.00**

1. To be judged on farm during June.
2. All Sheep on the farm to be shown.

**98 For the Best Flock of Sheep, any Breed or Cross under 100 ewes**  
 (Shepherd to take prize money) **£10.00 £7.00 £5.00**

**The Sheila Colman Challenge Cup** presented in memory of the late Mrs. Sheila Colman for the best entry in the above Class.

**99 For the Best Flock of Sheep, any Breed or Cross over 100 ewes and under 500 ewes**  
 (Shepherd to take prize money) **£10.00 £7.00 £5.00**

**The Agri-Lloyd Cup** presented to the winner of the above Class.

**100 For the Best Flock of Sheep, any Breed or Cross over 500 ewes**  
 (Shepherd to take prize money) **£10.00 £7.00 £5.00**

**The Herontye Trophy** presented by the late Lady Ivy Glendyne for the best entry in the above Class.

## **GROUP OF PIGS [CLASS PUT ON HOLD FOR 2019]**

**Sponsored by: William Hextall**

**Entry Fee: £5.00**

1. To be judged on farm during June.
2. All Pigs on the farm to be shown.

### **101 For the Best Group of Free Range Pigs, any Breed or Cross on the Farm**

**£8.00 £6.00 £5.00**

**A Challenge Cup** presented to the winner of the above Class.

## **BEST FARMED FARMS**

**Sponsored by W.D. Passmore & Sons**

**Entry Fee: £10.00**

1. These competitions are open to members of the Society farming within the Society's area. **ONLY ONE ENTRY PER FARMING OPERATION/BUSINESS PERMITTED.**
2. Farms run solely for the production of market garden-crops shall not be eligible.
3. All land farmed by the competitor must be included in one entry.
4. The judges will consider the general management of the farm by the way in which the occupier has utilised the soil type, contour, fixed equipment, capital resources and all other relevant factors to the best economic and environmental advantage. They will consider the quality and management of the livestock where applicable and will pay particular attention to the way in which the farmer is developing his land to its future benefit.
5. Farms will be judged on farm end of June/early July.
6. The decision of the Committee in regard to the interpretation of these regulations shall be final.

### **102 For the Best Managed and Cultivated Farm under 500 acres**

**£20.00 £15.00 £10.00**

**The A.J. Shier Memorial Challenge Cup** presented to the best entry in the above Class.

### **103 For the Best Managed and Cultivated Farm over 500 acres**

**£20.00 £15.00 £10.00**

**The Arthur Howard Challenge Trophy** presented to the best entry in the above Class.

## **CONSERVATION CLASSES**

**Sponsored by: C.J. Hedley Agri-Environmental Consultants Ltd.**

**Entry Fee: £6.00**

1. To be judged on farm end of June/July.



2. Class 104A: To be either the creation of a new feature, or the maintenance or restoration of an existing one.
3. Classes 104A&B: Projects may be funded by Environmental Schemes or unfunded, though funding will be taken into account.
4. Classes 104A&B: Woodland can be included.

**104A For the Best Managed Single Feature on the Farm** **£12.00 £8.00 £6.00**

**104B For the Best Whole Farm Conservation Policy** **£12.00 £8.00 £6.00**

**The Peter Miller Memorial Challenge Cup** presented to the best entry in the above Classes 104A & 104B.

## **GROWING CROPS**

**Sponsored by Bartholomews Agri Food Ltd**

**Entry Fee: £4.00**

1. Cereal Crops to be judged on farm end of June/early July.  
Break-Crops to be judged on farm in June/July.
2. Minimum area of four acres in each Class and the whole field to be judged.
3. Winter and Spring varieties are as classified.
4. Milling (groups 1 & 2) and Feed (groups 3 & 4) varieties are as classified.
5. No competitor to enter more than one crop in a Class.

## **CEREALS**

**105 For the Best Crop of Winter Wheat (Milling)** **£7.00 £5.00 £4.00**

**106A For the Best Crop of Winter Wheat (Feed)** **£7.00 £5.00 £4.00**

**106B For the Best Crop of Spring Wheat** **£7.00 £5.00 £4.00**

**107 For the Best Crop of Any Other Spring Cereal** **£7.00 £5.00 £4.00**

**108 For the Best Crop of Winter Barley** **£7.00 £5.00 £4.00**

**109 For the Best Crop of Spring Barley** **£7.00 £5.00 £4.00**

**The late Mrs. Leicester Reed Perpetual Challenge Cup** presented for the best crop of growing corn from Classes 105 to 109.

## **BREAK-CROPS**

**110A For the Best Crop of Winter Oats** **£7.00 £5.00 £4.00**

**110B For the Best Crop of Spring Oats** **£7.00 £5.00 £4.00**

**111 For the Best Crop of Winter Field Beans** **£7.00 £5.00 £4.00**

**112 For the Best Crop of Spring Field Beans** **£7.00 £5.00 £4.00**

**113 For the Best Crop of Field Peas** £7.00 £5.00 £4.00

**114 For the Best Crop of Winter Oil Seed Rape** £7.00 £5.00 £4.00

**115 For the Best Crop of Spring Oil Seed Rape** £7.00 £5.00 £4.00

**116 For the Best Crop of Other Combinable Break Crops** £7.00 £5.00 £4.00

**The Tregear Perpetual Challenge Cup** presented by Mr. & Mrs V.A.G. Tregear to the best entry of 'Break-Crops' from Classes 110 to 116.

## **BEEF ON FARM**

**Sponsored by T.R. Dickson (Continental classes) & S.D. & J.J. Feakes (Native classes)**  
**Entry Fee: £5.00**

1. To be judged on farm in early September.

2. All eligible cattle (for Classes 117 & 120) other than stock bulls (Classes 121 & 122) to be judged subject to a minimum of ten.

**117 For the Best Suckler Herd** (cows with calves at foot and in-calf heifers)  
(Herdsmen to take the prize money) £10.00 £7.00 £5.00

**118 For the Best Pure Bred Native Suckler Herd** (cows with calves at foot and in-calf heifers). (Herdsmen to take the prize money) £10.00 £7.00 £5.00

**119 For the Best Beef Young Stock**  
(Herdsmen to take the prize money) £10.00 £7.00 £5.00

**120 For the Best Pure Bred Native Beef Young Stock**  
(Herdsmen to take the prize money) £10.00 £7.00 £5.00

**121 For the Best Beef Stock Bull** (one entry per farm)  
(Herdsmen to take the prize money) £10.00 £7.00 £5.00

**122 For the Best Pure Bred Native Beef Stock Bull** (one entry per farm)  
(Herdsmen to take the prize money) £10.00 £7.00 £5.00

**The Geoffrey Rham Memorial Salver** presented to the Best Beef Suckler Herd entry from Class 117.

**The Brian Parkes Memorial Challenge Cup** presented to the Best Pure Bred Native Suckler Herd entry from Class 118.

**The Buncton Challenge Bowl** presented by the late Tom Rowland to the Best Beef Young Stock in Class 119.

**The Searles Challenge Cup** presented to the Best Pure Bred Native Beef Young Stock in Class 120.

**A Challenge Cup** presented by Ralph Dickson to Best Pure Bred Continental Beef Stock Bull in Class 121.

**A Challenge Cup** presented by Simon & Julia Feakes to Best Pure Bred Native Beef Stock Bull in Class 122.

## **FORAGE FIELD CROPS**

**Sponsored by Mark W. Burrell**

**Entry Fee: £4.00**

1. Classes 123 & 125 to be judged on farm in September. Class 124 to be judged on farm in December.
2. Minimum area of one acre in each Class, and the whole field to be judged.
3. Winners in Classes 123 & 124 will score points for the 2020 Show.

**123 For the Best Kale, Rape or Fodder Crop** (sown before 1<sup>st</sup> July)

**£7.00 £5.00 £4.00**

**124 For the Best Kale, Rape or Fodder Crop** (sown after 1<sup>st</sup> July)

**£7.00 £5.00 £4.00**

**125 For the Best Forage Maize**

**£7.00 £5.00 £4.00**

**The Margot Burrell Challenge Cup** awarded to the best entry in Class 125.

## **ENSILAGE ON FARMS**

**Sponsored by Cox & Robinson Farm Direct**

**Entry Fee: £4.00**

1. To be judged on farm during December 2019/January 2020.
2. Ensilage made in a tower may not be entered.
3. Competitors must provide an analysis for grass and maize silage in clamps, pits or stacks and this will be taken into account by the Judge.
4. Winners in this Class will score points for the 2020 Show.

**126 For the Best Clamp, Pit or Stack of Maize Ensilage**

**£7.00 £5.00 £4.00**

**127 For the Best Clamp, Pit or Stack of Grass Ensilage**

**£7.00 £5.00 £4.00**

**128 For the Best Bale of Grass Ensilage**

**£7.00 £5.00 £4.00**

**The late E.C. Eric Smith Challenge Cup** awarded to the best entry from Classes 126 to 128.

**129 For the Best Bale of Haylage**

**£7.00 £5.00 £4.00**



***The Butterfly Project is one of the Society's chosen charities this year and including the donations received on the tractor & trailer rides. So please give generously!***

The Butterfly Project includes a day centre in Springfield Road, Horsham supporting adults with learning difficulties, autism and other associated conditions. They are a dynamic organisation focusing on providing individuals with training to develop work and life skills along with plenty of opportunities to develop friendships and relationships.

The Project team are always keen to develop new initiatives and one example is an exciting new local greenspace project giving the opportunity for group members to gain valuable horticultural and outdoor skills and as well as social interaction and enjoyment. There is also scope to generate some income from growing and selling plants to add to other homemade products offered in their sales area in the day centre in Springfield Road.

[www.thebutterflyprojecthorsham.co.uk](http://www.thebutterflyprojecthorsham.co.uk)

## RULES

1. That the Society, established in the interest of Agriculture and for the encouragement of skilled labour, be called the “WEST GRINSTEAD AND DISTRICT PLOUGHING AND AGRICULTURAL SOCIETY”
2. The District over which the operations of the Society shall extend comprises the whole of the Parishes of West Grinstead, Shipley, Cowfold, Shermanbury, Ashurst, Steyning, Bramber, Ashington, Warninglid, Thakeham, Storrington, Sullington, Washington, Wiston, Angmering, Rustington, East Preston, Kingston, Ferring, Patching, Clapham, Worthing, Findon, Sompting, Coombes, Lancing, Upper Beeding, Nuthurst, Lower Beeding, Horsham, Itchingfield, Warnham, Rusper, Slinfold, the portions of the Parish of West Chiltington lying in the East of the Village, thence following the road via West Chiltington Common to Roundabouts Crossways and the portion of the Parish of Billingshurst lying to the East of the A29, Stane Street.
3. The Society shall consist of a President, Vice-President, Patronesses, Patrons and Members paying an annual subscription of not less than One Pound from whom the Committee of Management shall be elected.
4. The Committee of Management shall consist of not less than twelve Members, with power to add to their number. If a Committee Member does not attend at least one Committee Meeting in any year or send his apologies for absence, it will be assumed the following year that he does not wish to remain on the Committee. The Chairman of Committee shall not hold office for more than two consecutive years.
5. There shall be a General Meeting of the Society annually, at which the previously audited accounts of the Society shall be presented, Officers elected and alterations of Rules made.
6. Subscriptions and Donations to be paid to the Secretaries.
7. Only Members and their Employees nominated by them shall be entitled to enter those classes confined to the Society’s area.
8. If only one entry in any class, the class may be cancelled at the Judge’s and Steward’s discretion.
9. That no premium be awarded to any Entry not approved by the Judges, and if there be not more than one competitor or exhibit no premium shall be awarded unless the Judge considers the claimant possesses sufficient merit.
10. All protests against awards must be made in writing to the Secretaries at their office on the Show Ground before 2.00 p.m. on the day of the Ploughing Match or within 30 minutes of the Judge’s decision. The sum of £5.00 must be deposited with each protest, such sum to be forfeited to the funds of the Society, if, in the opinion of the Committee such protest has been made without sufficient grounds, the decision of the Committee in all cases shall be final.
11. A *bona fide* farmer is one who derives the main portion of his living from the working of his Farm.
12. The Committee reserve the right to refuse any entry without stating their reason. Late entry fee penalties may apply.
13. The Investments of the Society, shall be maintained at HSBC, or such other banks or building societies at the discretion of the Treasurer and Honorary Secretary.

## **PREVIOUS WEST GRINSTEAD & DISTRICT PLOUGHING MATCHES**

*Earlier dates to follow in due course*

1958 Sweethill Farm, Ashurst  
1959 West Grinstead Park  
1960 Pound Houses, Cowfold  
1961 West Grinstead Park  
1962 West Grinstead Park  
1963 Dockers Lodge, Plummers Plain  
1964 Pound Houses, Cowfold  
1965 Pound Houses, Cowfold  
1966 West Grinstead Park  
1967 Buncton Manor Farm, Wiston  
1968 Pound Houses, Cowfold  
1969 Ham Farm, Steyning  
1970 Pound Farm, Shipley  
1971 Pound Farm, Shipley  
1972 Pound Houses, Cowfold  
1973 Orchard Farm, Maplehurst  
1974 Willetts Farm, West Chiltington  
1975 Brickkiln Farm, Southwater  
1976 Pound Farm, Shipley  
1977 Locks Farm, Washington  
1978 Baileys Farm, Coolham  
1979 Ham Farm, Steyning  
1980 Pound Farm, Shipley  
1981 Blonks Farm, Shipley  
1982 Brickkiln Farm, Southwater  
1983 West Grinstead Park  
1984 Church Farm, Coombes  
1985 Pollards Hill Farm, Southwater  
1986 Pollards Hill Farm, Southwater  
1987 West Grinstead Park  
1988 West Grinstead Park  
1989 West Grinstead Park  
1990 Brickkiln Farm, Southwater  
1991 West Grinstead Park  
1992 Brickkiln Farm, Southwater  
1993 Aglands Farm, Cowfold  
1994 Fair Oak Farm, Wiston  
1995 Brickkiln Farm, Southwater  
1996 Upper Chancton Farm, Washington  
1997 Aglands Farm, Cowfold  
1998 Westons Farm, Itchingfield  
1999 Brickkiln Farm, Southwater  
2000 Clothalls Farm, West Grinstead  
2001 Fair Oak Farm, Wiston  
2002 Ford Farm, Ashurst

2003 Upper Chancton Farm, Washington  
2004 Clothalls Farm, West Grinstead  
2005 Westons Farm, Itchingfield  
2006 Priors Byne Farm, Partridge Green  
2007 Aglands Farm (cancelled- Foot & Mouth)  
2008 Aglands Farm, Cowfold  
2009 Upper Chancton Farm, Washington  
2010 Clothalls Farm, West Grinstead  
2011 Westons Farm, Itchingfield  
2012 Priors Byne Farm, Partridge Green  
2013 Fair Oak & Buncton Manor, Wiston  
2014 Broomlands Farm, Warnham  
2015 Upper Chancton Farm, Washington  
2016 Aglands Farm, Cowfold  
2017 Westons Farm, Itchingfield  
2018 Priors Byne Farm, Partridge Green

- The First Annual Dinner of the Society was 19<sup>th</sup> October 1956 held at Cowfold Village Hall

## PHOTOGRAPHY



*Please note that, as a popular local event, there may be a range of photographers at the Ploughing Match & Show and whose images maybe used in conjunction with reporting on the event including in displays and published forms, both online & in print.*

# WEST GRINSTEAD & DISTRICT PLOUGHING & AGRICULTURAL SOCIETY

## BURSARY

**The West Grinstead & District Ploughing & Agricultural Society Award is available to candidates living or working within - or in the immediate vicinity of - the West Grinstead Ploughing & Agricultural Society area** (including the Parishes of West Grinstead, Shipley, Cowfold, Shermanbury, Ashurst, Steyning, Bramber, Ashington, Warninglid, Thakeham, Storrington, Sullington, Washington, Wiston, Angmering, Rustington, East Preston, Kingston, Ferring, Patching, Clapham, Worthing, Findon, Sompting, Coombes, Lancing, Upper Beeding, Nuthurst, Lower Beeding, Horsham, Itchingfield, Warnham, Rusper, Slinfold West Chilmington and Billingshurst).

**Candidates will show that they need assistance to develop a career in Agriculture. Previous successful applications have included attending college courses, studying dairy farm management abroad, attending a dairy management academy and forestry handling equipment training. Awards will be considered at the discretion of the Society's panel. Successful candidates will be supported by a designated member of the Society who will oversee the Award.**

**Please apply in writing to Rowan Allan as Hon. Sec by 1<sup>st</sup> August 2019**

**H.J. BURT, The Estate Offices, Steyning, West Sussex BN44 3RE**  
**01903 879488 or [rallan@hjburt.co.uk](mailto:rallan@hjburt.co.uk) (application forms available on request)**  
**[www.westgrinsteadploughing.co.uk](http://www.westgrinsteadploughing.co.uk)**



*2018 Bursary winner Ryan Gue on his dairy farm placement in Vermont - photo with visiting English farming tourist!*



## **NOTES**

# HEALTH & SAFETY POLICY

We, the West Grinstead & District Ploughing & Agricultural Society, recognise and accept our responsibility to ensure, so far as is reasonably practicable, the health and safety of all our members, competitors, exhibitors and members of the public who may be affected by our activities.

Any decisions made by the Society will take full account of any Health & Safety implications for all our workers and those under our control. We will endeavour to ensure the health and safety of all others who could be foreseeably affected by activities under our control.

The Committee of the Society has an appointed Safety Officer. The Safety Officer has full authority to maintain safety and, his/or his deputies' directions and instructions must please be followed at all times.

We hope everyone has an enjoyable day at the Match, but would ask everyone to please note the following points:

- The First Aid point is located next to the Secretary's Tent on the Showground. In case of an accident or incident please either speak to a Society Official or the Safety Officer, or proceed straight to the First Aid point.
- Please notify a Society Official or at the Secretary's tent of any potential health & safety issues/incidents.
- Please park in allocated spaces only and follow instructions/directions provided.
- Members of the public are not permitted to operate machinery.
- Children must be supervised at all times and especially near livestock, machinery and any potential hazards around farm buildings.
- Please use litter bins provided and also clean-up after your dog. Beware of open containers which might contain disinfectant foot-dips not suitable for drinking.
- Do not enter areas prohibited for public access and especially closed areas of farmyards or buildings. Stand back from horses, ploughs, tractors, cattle and all working machinery.
- Beware of uneven and slippery surfaces in the field, please wear sensible footwear suitable for conditions.
- Please be especially aware of any potential watercourses (including rivers, ditches etc.) and any lagoons for the storage of slurry or dirty water.
- Please keep shut gates shut and do not obstruct tracks or passageways.

# WEST GRINSTEAD & DISTRICT PLOUGHING & AGRICULTURAL SOCIETY

*Gives you a*

## **SUMMER** **ROCK 'N' ROAST**



### **'DESSIE MAGGIE' FULL BAND, LIVE MUSIC**

**JUICY LOCAL LAMB ROAST & BBQ.**

**SUCCULENT SALADS. FRESH STRAWBERRIES & CREAM. CHEESE & BISCUITS. CASH BAR**

**SATURDAY 29<sup>th</sup> JUNE 2019**

*7.30 pm onwards*

*at*

**THE BEAUTIFUL 17<sup>TH</sup> C. SOUTHLANDS BARN**  
**SOUTHLANDS FARM, SOUTHLANDS LANE,**  
**WEST CHILTINGTON, RH20 2JU**

*By kind permission of the Kensett family*

*Tickets @ £15 to include food & complimentary drink from:*

**Felicity Elliott (07866 202588 or [ladylissy@hotmail.co.uk](mailto:ladylissy@hotmail.co.uk))**

**or Rowan Allan (07971 281785 or [ralan@hjburt.co.uk](mailto:ralan@hjburt.co.uk))**

***Profits to The Butterfly Project, Horsham***